

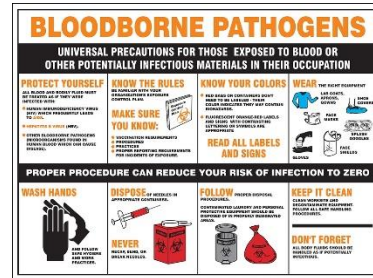
**Accident and Injury Reporting**

- Report an accident or injury to your supervisor **Immediately** even if you do not need medical attention.
  - Report all near misses and property damage
- You must report to your supervisor and CRS.
- We want to keep you **SAFE!**



**Bloodborne Pathogens**

- Disease causing organisms, viruses and bacteria that can be acquired if you are exposed to another person’s blood or body fluid.
- Assume all blood is contaminated; if you do encounter a bodily fluid, rinse immediately.
- Always use gloves when handling an item with bodily fluids on it.
- Contact maintenance and janitorial services to clean up after an accident.



**Lock Out/Tag Out (LOTO)**

- Protects employees who service and maintain equipment by placing a lock on a device that prevents the energy from being released by blocking the flow of energy from power source to the equipment to prevent injury while assessing the equipment.
- Training required to LOTO
- **NOBODY** can EVER unlock or enter a machine except the person who locked it.
- When equipment is locked:
  - Work around it
  - Check with supervisor for the reason
  - Keep a safe distance
  - Removing a lock is cause for immediate termination



**Personal Protective Equipment (PPE)**

- Used to protect employees from hazards to the head, hands, eyes and feet.
- Several types of PPE are offered but PPE does not protect from ALL hazards found in manufacturing, construction, or warehouse environments.
- Types of PPE:
  - Hearing Protection
  - Respiratory Protection
  - Gloves
  - Footwear
  - Eyewear



**Safety Data Sheets (SDS)**

- Provide information about chemicals used in the workplace.
- There are 16 mandatory sections
  - The first 10 deal with health and safety concerns
  - The remaining sections deal with environmental concerns
- All SDS’s are maintained by the Technical Management Department and there are copies available onsite at the facility for review.

